

canopy
by Hilton™

PARIS | EIFFEL TOWER





Do you know **Canopy by Hilton ?**

4* Premium Lifestyle brand by Hilton

Extension of the neighbourhood and face of the local culture, Perfect blend of tradition, heritage and modernity

Canopy by Hilton Paris Eiffel Tower Opened in May 2021

- 1st Canopy property in France
- 30th Canopy property in the world

Key central location

In the heart of vibrant cultural and social hubs.

Close to a lot of headquarters

Vibrant Neighborhood

Rich historical and cultural surroundings

Monuments: Eiffel Tower, Arc de Triomphe

Museums: Palais de Tokyo, Palais Galliera,
Maison de la Radio, Musée du Vin

Shopping & culture: Champs-Élysées, Avenue Montaigne

Urban wood: Bois de Boulogne

Accessibility

35 km from Paris CDG Airport

21 km from Paris Orly Airport

5 km from Gare du Nord (Eurostar and Thalys train)

190m from Metro Station Trocadero - lines M6 and M9

Parking on property

Bus/coach Drop off & Pick up in front of hotel

Taxi stand 100m from hotel





Inspired & Inspiring

- ❖ Mix of historical heritage and modern lifestyle
- ❖ Art Deco style inspired by Le Corbusier (1930')
- ❖ Industrial feel reflecting the old electric plant
- ❖ Parisian spirit through close collaboration with local producers and artists



Comfort & Design

- ❖ 123 spacious guestrooms (Starting from 23 sqm)
- ❖ Existing twin and connecting rooms, ideal for groups
- ❖ Including 16 Suites
- ❖ 7% of the rooms with Eiffel Tower view
- ❖ Nespresso coffee machine and tea bags
- ❖ Bathrobe and slippers on request



Work, Network & Meet

- ❖ 2 meeting rooms
- ❖ Flexible, modern design
- ❖ High quality AV equipment
- ❖ Adaptable to all of your events:
 - ❖ afterworks
 - ❖ confidential meetings
 - ❖ product launches
 - ❖ cocktail meeting
 - ❖ workshops
 - ❖ dressing-room
 - ❖ team-building ...





Stylish Canopy Lounge

- ❖ Ground floor, 100m2 cosy and warm space, bathed by natural light through a glass roof
- U set up: 20 pax
- Classroom set up: 20 pax
- Theater set up: 50 pax
- Stand up cocktail: 55 pax

Tranquil Retreat Lounge

- ❖ 33m2 cosy space
- ❖ Art Deco library
- ❖ Ideal for confidential and small meetings and briefings
- Max capacity: 25 pax
- Boardroom: 16 pax
- Theater set up: 15 pax

canopy PARIS
by Hilton™ EIFFEL TOWER





Convenient Spaces and Services

- ❖ Free wifi
- ❖ Transfer Refuge
- ❖ Fitness center 60sqm
- ❖ Room service until 22:00
- ❖ Laundry service
- ❖ Front desk 24/7
- ❖ Personalised services
- ❖ 11 languages spoken
- ❖ Porterage on request
- ❖ Room drop of gifts on request



Our **MICE** offers & conditions

- ❖ Half and all day room rental
- ❖ Meeting packages including 2 coffee-breaks and a lunch
- ❖ Check-in for groups from 4pm
- ❖ Check-out for groups till noon
- ❖ Welcome desk in the lobby
- ❖ Flexible cancellation and payment policy
- ❖ Meetings Simplified : Seamless online experience for meetings up to 35 attendees and up to 25 guest rooms (less than 20,000€ in total). 24h prior arrival cancellation policy and payment the day of the event
- ❖ Event planner program : As a Hilton Honors member, you can earn points every € spent on events and use them for your next stay



Eat, Drink & Meet



canopy by Hilton
PARIS EIFFEL TOWER

canopy
by Hilton
PARIS | EIFFEL TOWER

Banquet Menu

Your Event



Unique Menu : Please choose 1 Starter, 1 Main Course and 1 Dessert for the whole group

Starters

Draped smoked salmon, Isigny cream, condiments
Beetroot Carpaccio with Comté cheese, poultry juice and mixed baby greens.
Soft-boiled egg, parsnip cream, parmesan coulis and dry-cured ham chips
Poultry Paté en croute, condiments such as ravigote, baby greens salad
Leeks with vinaigrette, mimosa eggs, winter baby greens.

Meat

Roasted yellow-skin chicken supreme with velouté, millefeuille of celery and potato millefeuille
Mitonné of beef chuck with carrots.
Pork tenderloin with sweet spices, snacked on, seasonal vegetables.
Quasi of veal cooked just pink with morel cream, parsnip "textures".
Butcher's piece, béarnaise sauce, pont neuf potatoes

Fish

Black Pollock, Nantais butter, creamy Arborio risotto.
Roasted cod loin, smashed potatoes with cebette, in the spirit of a brandade.
Sea bream fillet, Jerusalem artichokes and herb mitrailles, poultry jus.
Crispy salmon and black olive tapenade, lemon herb beurre blanc, pilaf rice
Snacked sea bass fillet, Thai condiment, vegetables wok

Cheese/Desserts

Vanilla crème brûlée
Mi-cuit with chocolate and salted butter caramel
Lemon meringue tartlet
Exotic fruit velouté, pineapple sorbet
Pineapple Carpaccio, yuzu sorbet, coriander gel



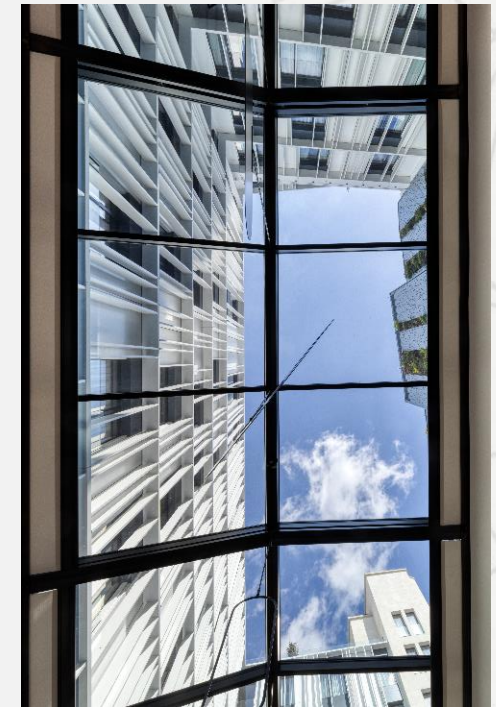


L'Esprit Nouveau

Restaurant & Bar - All in one space!

Breakfast from 7 to 10.30 am
Lunch & diner from noon to 11 pm
Flexible schedule for groups

60 seats



canopy by Hilton™ PARIS
EIFFEL TOWER



Eylau Paris rooftop

The place to be in Paris !

Lunch & diner
Available for privatization

80 pax in cocktail style



Meaningful Sustainability

- ❖ Carbon Offset Light Stay
- ❖ In-room glass water bottles can be refilled at the fountain
- ❖ Chef's menu is built around local suppliers' seasonal products. Zero waste policy.
- ❖ Greeneries accross the property
- ❖ Retail wall with local suppliers' artcrafts







Show me you **know me**

- ❖ **Ideal location**, at the heart of a cultural hub, surrounded by **prestigious museums and monuments**
- ❖ **Flexible** cancellation and payment policy
- ❖ 2 spaces for your meetings, afterworks, product launches, team-buildings...
- ❖ Undeniably **large size** of the rooms
- ❖ Authentic **French cuisine** with a modern, urban spirit. Items locally and seasonally sourced. Special **group menu** perfectly adapted to your **event**

A person with blonde hair in a bun, wearing a black tank top and a long, flowing orange scarf, stands with their back to the camera. They are looking out over a cityscape at sunset. The Eiffel Tower is the central focus in the background, illuminated by the warm light of the setting sun. The sky is a mix of soft pinks, oranges, and purples. The city below is a dense collection of buildings, with some modern skyscrapers visible on the right side.

Positively Yours.

canopy
by Hilton™
PARIS | EIFFEL TOWER